

New GeNei™ Restriction Modification Teaching Kit

Description: Restriction Enzyme and its methyl transferase or methylase (modification) form a Restriction Modification (RM) system. Different types of bacteria have developed the RM system as a defense mechanism against bacteriophages.

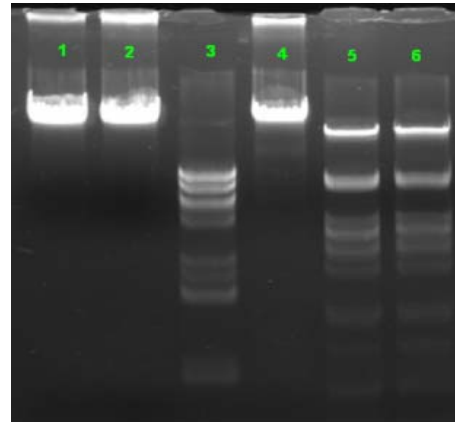
The kit illustrates the sequence specificity of a modifying enzyme that protects DNA from restriction enzyme digestion.

The Kit provides materials sufficient for 10 experiments

Materials Provided:

- Lambda DNA
- Restriction enzyme 1 (RE1)
- Restriction enzyme 2 (RE2)
- Methylase enzyme (M1)
- Assay buffer
- S-adenosyl methionine
- MgCl₂
- Agarose
- 50x TAE
- 1.5 ml vials
- Gel loading Buffer
- Instruction Manual

Note: UV transilluminator and EtBr are required.



Digested Patterns of Methylated and Un-Methylated DNA

Lane 1 : No M1 and No RE1/RE2

Lane 2 : ME1 and No RE1/RE2

Lane 3 : No ME1 and RE1

Lane 4 : M1 and RE1

Lane 5 : M1 and RE2

Lane 6 : No M1 and RE2

(M1- Methylase, RE1- Restriction Enzyme 1 and RE2-Restriction Enzyme 2)

Ordering Information:

Product	Size	Cat #
GeNei™ Restriction Modification Teaching Kit (consumables for 10 experiments)	1 Pack	117751