

## GeNei™ Restriction Mapping Teaching Kit

**Description:** Restriction map is a description of restriction endonuclease cleavage sites within a piece of DNA. The kit demonstrates the methodology of restriction mapping of a circular DNA using two different restriction enzymes, individually and together, that cleaves the DNA into different pieces.

The kit contains enough reagents for 5/20 experiments

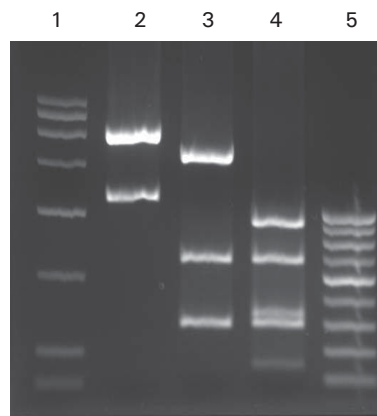
### Ordering Information:

Product	Size	Cat #
GeNei™ Restriction Mapping Teaching Kit (Consumables for 5 experiments & Elpho Kit (ETS1))	1 Pack	106273
GeNei™ Restriction Mapping Teaching Kit (Consumables for 5 experiments)	1 Pack	106274
GeNei™ Restriction Mapping Teaching Kit (Consumables for 20 experiments)	1 Pack	106275

**Note:** UV transilluminator and EtBr are required.

### Materials Provided:

- Template DNA
- Restriction Enzymes: *Bgl* I and *Ssp* I
- Assay Buffer
- Low Range DNA Ruler (Ready to use)
- Agarose
- Gel Loading Buffer
- 50X TAE
- 1.5 ml vials
- Instruction Manual



Lane 1: Low Range DNA Ruler  
 Lane 2: *Bgl* I Digest  
 Lane 3: *Ssp* I Digest  
 Lane 4: *Bgl* I/*Ssp* I Digest  
 Lane 5: 100 bp DNA Ladder

E D U C A T I O N A L P R O D U C T S