

XT-20 PCR System

Description: XT-20 PCR system is useful in amplifying long target DNA upto 20 kb from genomic DNA templates. A well-defined ratio of enzymes along with a set of highly optimized buffer systems (Assay buffers 20A and 20B) ensures specific PCR products. Assay buffer 20A is optimized for amplifications of 0.5kb to 12.0 kb target sequences and Assay buffer 20B is optimized for 12.0kb to 20.0kb amplifications.

XT-Polymerase buffer 20A: (1X)

50 mM Tris (pH 9.1), 16 mM (NH₄)₂SO₄, 1.75 mM MgCl₂.

XT-Polymerase buffer 20B: (1X)

50 mM Tris (pH 9.1), 16 mM (NH₄)₂SO₄, 2.25 mM MgCl₂.

Buffers supplied at 10X concentration.

Storage Buffer: 20mM Tris-HCl (pH 8.0), 100mM KCl, 0.1mM EDTA, 1mM DTT, 0.5% Tween 20, 0.5% Igepal and 50% glycerol.

Specification:

Enzyme is supplied at a concentration of 3 U/μl. With every order of XT-20 PCR system one vial each of 10X assay buffers 20A and 20B are supplied.

Application:

XT-20 PCR system is useful for amplifying long targets of genomic DNA up to 20.0kb.

- Can be successfully used for mapping and sequencing genomes and for analyzing eukaryotic genes.
- Can be used in diagnosis of human disease genes that often exceed a length of 10.0 kb.

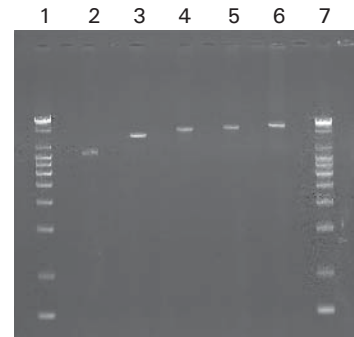
Ordering Information:

Product	Size	Cat #
XT-20 PCR system	100 U	105901
XT-20 PCR system	250 U	105900

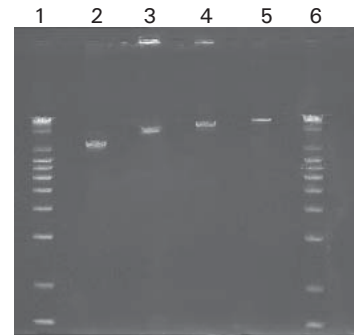
Performance Test:

XT-20 PCR system is tested for PCR amplifications of fragment sizes - 8.0 kb to 25.0 kb, using both human genomic DNA and lambda DNA as templates. Sequence specific primers were used for amplifications.

Store at : -20°C



Amplification of human genomic DNA using XT-20 PCR system. Specific target sequences of 8.0 to 22.0 kb were amplified using tPA gene sequence specific primers and 2.0 units of XT-20 PCR system and analysed on 0.6% agarose gel.



Amplification of Lambda DNA using XT-20 PCR system. Target sequences of 10.0 to 25.0 kb were amplified using sequence specific primers and 2.0 units of XT-20 PCR system and analysed on 0.6% agarose gel.