

MAGIC Amplification Solution (2.5X)

Description: Amplification of templates with high GC content is difficult due to its robust secondary structure leading to inefficient template denaturation. MAGIC solution is a PCR enhancer that facilitates successful amplification of GC-rich sequences (up to 80%).

Application:

- Amplification of GC-rich (up to 80%) templates
- Amplification of repeat sequences
- Multiplex PCR amplification from GC-rich templates

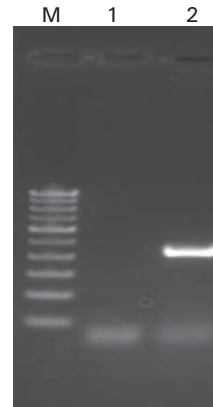
Highlights:

- A PCR enhancer facilitating amplification of GC-rich templates (up to 80%)
- Does not adversely affect normal amplification reactions
- Does not alter fidelity of PCR enzymes
- Can be used with Taq DNA Polymerase as well as Long PCR Polymerase systems

Storage: 4°C

Ordering Information:

Product	Size	Cat #
MAGIC Amplification Solution (2.5X)	1.0 ml	105450



Amplification of GC-rich template (80%) from human Fragile-X using MAGIC solution.

- Lane 1 : XT-5 PCR System without MAGIC solution
- Lane 2 : XT-5 PCR System with MAGIC solution
- Lane M : 100 bp DNA ladder