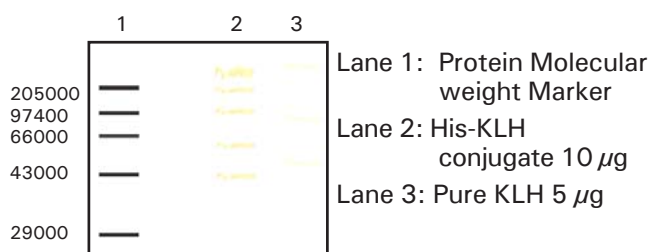


Monoclonal anti-Keyhole Limpet Hemocyanin (KLH) Clone # 1C10D2A1

Description: This antibody is produced using a peptide conjugated to keyhole limpet hemocyanin (KLH) as immunogen. It reacts with KLH in ELISA, dot blot and western blot using peptides conjugated to KLH. This antibody is of IgM isotype.

Working dilution in the range of:
1:100-1:500 by direct ELISA
1:2-1:50 by immunoblotting

Immunoblotting with MAb anti-KLH antibody



Ordering Information:

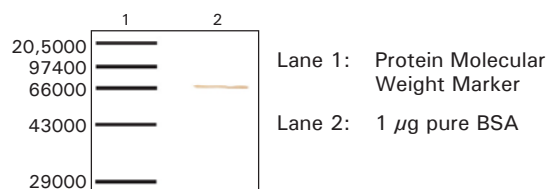
Product	Size	Cat #
Monoclonal anti-Hemocyanin (KLH) Clone # 1C10D2A1	0.5 ml	105933

Monoclonal anti-Bovine Serum Albumin (BSA) Clone # 2H4E1

Description: This antibody is produced using a peptide conjugated to BSA as immunogen. It is highly reactive with the 65 kDa protein in immunoblotting. It may be used in ELISA and when purified, immunoaffinity purification or adsorption of BSA from biological fluids. This antibody is of IgM isotype.

Working dilution in the range of:
Neat-1:2 in ELISA
Neat-1:2 in immunoblotting

Immunoblotting with MAb anti-BSA antibody



Ordering Information:

Product	Size	Cat #
Monoclonal anti-Bovine Serum Albumin (BSA) Clone # 2H4E1	0.5 ml	105934