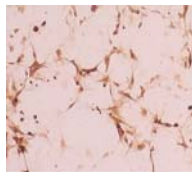


New Monoclonal Anti-Chloramphenicol Acetyl Transferase (CAT) Mab Clone # 3E9F4

Description: Antibody was produced using purified Chloramphenicol Acetyl Transferase as immunogen. This antibody may be used in the detection of 'CAT' reporter gene in cloned gene sequences in transfected cell lysates. It is reactive in all immunological techniques like ELISA, immunoblotting as well as immunocytochemistry. In immunoblotting it recognizes a 26kD protein-CAT. This antibody is of IgG1 isotype.



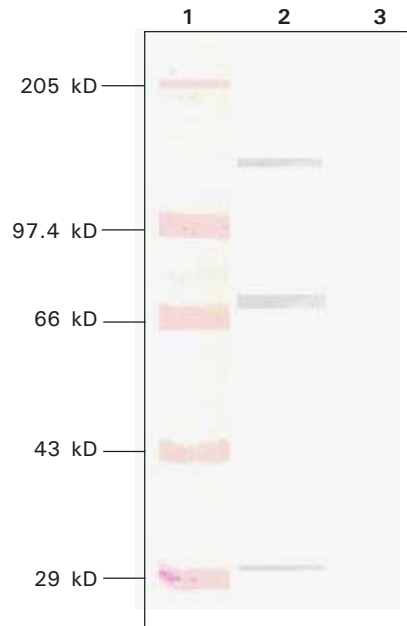
Transfected COS-7 Cells stained for CAT

Ordering Information:

Product	Size	Cat #
Monoclonal Anti-Chloramphenicol Acetyl Transferase (CAT) Mab Clone # 3E9F4	0.5 ml	117747

New Monoclonal Anti-PhosphoTyrosine Mab Clone# CRL-1955(ATCC)

Description: This antibody may be used in the detection of phosphorylated tyrosine residues in proteins by immunoblotting. This antibody is of IgG1 isotype.



Immunoblotting with anti-P-tyr-1Mab

Lane 1 : Protein Molecular Weight Marker-High

Lane 2 : Cell lysate of PMA induced Jurkat Cells

Lane 3 : Cell lysate of PMA uninduced Jurkat Cells

Ordering Information:

Product	Size	Cat #
Monoclonal Anti-Phospho Tyrosine Mab Clone # CRL-1955 (ATCC)	0.5 ml	117748