

GeNei™ Albumin Depletion Kit

Description: The Albumin depletion kit has been designed to deplete albumin from human sera or plasma. Serum sample complexity is significantly reduced by utilizing the kit, enabling the detection of low abundance proteins by 2D electrophoresis. The depletion procedure is performed using disposable spin columns, allowing the parallel processing of multiple samples.

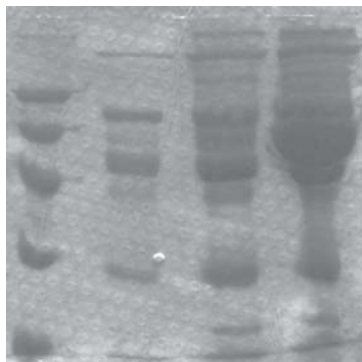
The kit has been optimized to bind human serum albumin efficiently. It also effectively removes albumin from sera of rabbit, rat and mouse, making it well suited for many proteomic studies.

Storage: 4°C

Materials Provided:

- Albumin binding resin (3 ml of 50% suspension)
- Equilibration buffer
- Extraction buffer
- Spin columns

M F1 F2 L



Depletion of albumin from human plasma

M: Protein Marker
 F1: Flow through (0.1ml load)
 F2: Flow through (0.2ml load)
 L: 2µl Human Plasma

Ordering Information:

Product	Size	Cat #
GeNei™ Albumin Depletion Kit, 5 preparations	1 Pack	107629

GeNei™ Albumin and IgG Depletion Kit

Description: The Albumin and IgG depletion kit facilitates depletion of albumin and IgG from human sera or plasma. The kit utilizes affinity resin for depletion of albumin and IgG from serum. Serum sample complexity is significantly reduced by utilizing the kit, enabling the detection of low abundance proteins by two-dimensional electrophoresis.

The kit has been optimized to handle human sera efficiently. It also effectively removes albumin and IgG from sera of other species like rabbit, rat and mouse, making it suitable for many proteomic studies.

Storage: 4°C

Materials Provided:

- Albumin and IgG depletion resin (3 ml of 50% suspension)
- Equilibration buffer
- Extraction buffer
- Spin columns

Ordering Information:

Product	Size	Cat #
GeNei™ Albumin & IgG depletion kit, 5 preparations	1 Pack	107640